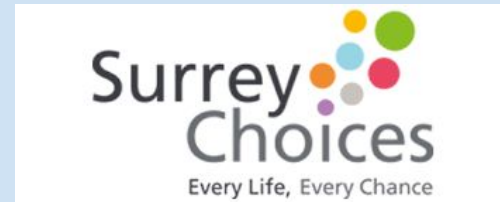




Welcome to our TPS Post-16 Preparation Evening



Introduction

- Importance of transition
- Preparing your child (and yourself) early
- Knowing what's on offer - plan well and visit everywhere
- TPS are here to help



Key Stage 4 (KS4)

Accredited Subjects:

- **Maths** - Pre-Entry Level, Entry Levels 1, 2 & 3, Level 1 Award, Foundation GCSE (Grades 1 - 5)
- **English** - Pre-Entry Level, Entry Levels 1, 2 & 3, Functional Skills Level 1, Functional Skills Level 2
- **Science** - Pre-Entry Level, Entry Levels 1, 2 & 3, BTEC Level 1 Award, BTEC Level 1 Certificate

Key Stage 4 (KS4)

Other Accredited Subjects:

- Art
- ASDAN (Beliefs and Values)
- ASDAN (Personal Development)
- Drama
- Food Technology
- History
- ICT
- PFA (Preparation For Adulthood)

TPS College Link Programme

- Art
- Business
- Care
- Catering
- Engineering
- Hair and Beauty
- Media
- Sport

Annual Reviews and EHCP



Year 9	Year 10	Year 11
<ul style="list-style-type: none">• Students prepare a PowerPoint presentation.• Focus on 'Preparing for Adulthood'. This centres on aspirations, interests, and needs.• Visit providers of post-16 education.	<ul style="list-style-type: none">• Visit providers of post-16 education.• Attend Annual Review with ideas of what you would like for your son/daughter beyond The Park School.• The Year 10 Annual Review will be held in the autumn term.	<ul style="list-style-type: none">• Parents should have a clear idea of what provision is sought.• Read your child's draft EHCP carefully.• Students planning to go to college, will also need to apply directly to the college.• Final EHCP with placement confirmed will be issued by 31st March.

Leavers

POST-16	2021 - 2022	2022 - 2023
Philip Southcote School	6 students	4 students
Brooklands College	14 students	9 students
Dorton College	1 student	-
Green Corridor	1 student	-
Carwarden House School	-	5 students
Farnborough College of Technology	-	2 students

Key Considerations

- **There is no statutory requirement for the Local Authority to provide travel assistance for Post-16.**
- **Application processes vary between the different colleges.**
- **Seek independent advice about benefits that are available from the age of 16.**
- **The ‘Mental Capacity Act’ applies from 16, so before students reach this age, seek independent advice about Deputyship for your son/daughter.**
- **In preparation for adulthood, promote independence wherever possible. For instance, involve your son/daughter in household tasks where appropriate e.g. planning meals, making shopping lists, shopping trips, cooking, making beds and laundry.**

Post 16 Transitions

Timeline

What to expect of SEND in Year 11?

1. Annual Review Summer Term Year 10 or Autumn Term Year 11.
2. Receive a Draft EHCP Plan by December.
3. You respond to the Draft giving your preference for placement in year 12. You have 15 days to do this.
4. You must make an application to your preferred college for your preferred course. You can do this at anytime from October onwards. Please let your case officer know you have done so. Check individual college expectations.



Post 16 Transitions

Timeline continued

5. Surrey CC SEND Admissions then makes applications to your Parental Preference and the local mainstream college with your EHCP to ask if they can meet needs. Between January and February.
6. Surrey CC SEND Case Officer will provisionally accept the Placement and name in Section I of the EHCP.
7. All Year 11 EHCPs must be finalised naming a setting or type of setting by 31st March each academic year



Post 16 Transitions

Where to go for Help

[Moving from school to college \(post-16 education\) | Surrey Local Offer](#)

[Next steps: your transition guide to Surrey's post 16 training, employment and vocational pathways for young people with additional needs | Surrey Local Offer](#)

[Schools admissions guidance for young people with an Education, Health and Care Plan \(EHCP\) applying for post-16 education - Surrey County Council \(surreycc.gov.uk\)](#)

You Post 14 Case Officer NW

Dawn.Stoneham@surreycc.gov.uk

Your Post 14 CO SW

Ben.bowen@surreycc.gov.uk

Philip Southcote School

Learning for Life

- Purpose-built building - opened in Oct 2021
- Years 12 - 14: 1, 2 or 3 years, Monday - Friday.
- 2-week timetable:
- English x4, Maths x4, PSHE x3. Some can re-do GCSEs / work towards them.
- Accreditations (including WJEC units and NOC Level 1 units - these are all real-life based).
- Family Day once a week: Students create a lunch menu, make the meal, prepare the table, eat together, tidy.
- Skills Centre: 2 days per fortnight - 2 skills. Include: Hair and Beauty Salon, Café, Shop, Premises Team, Horticulture, Duke of Edinburgh (bronze), GASP.
- Residentials - one week away.



Supported Learning

Guildford College and Merrist Wood College



Our Study Programmes

Tier 1 – Merrist Wood: The Woodlands Centre - Pathway to Sensory Exploration

Tier 2 – Woodlands Centre & Guildford College - Pathway to Independence and Supported Work

Tier 3 – Guildford College - Pathway for Progression

Pathway to Supported Internship

Supported Internship

Tier 4 – Guildford & Merrist Wood - Foundation Programme

Tier 5 – Guildford & Merrist Wood - Foundation Programme

Pathway to Sensory Exploration - Tier 1

The
Woodlands
Centre at
Merrist Wood
College

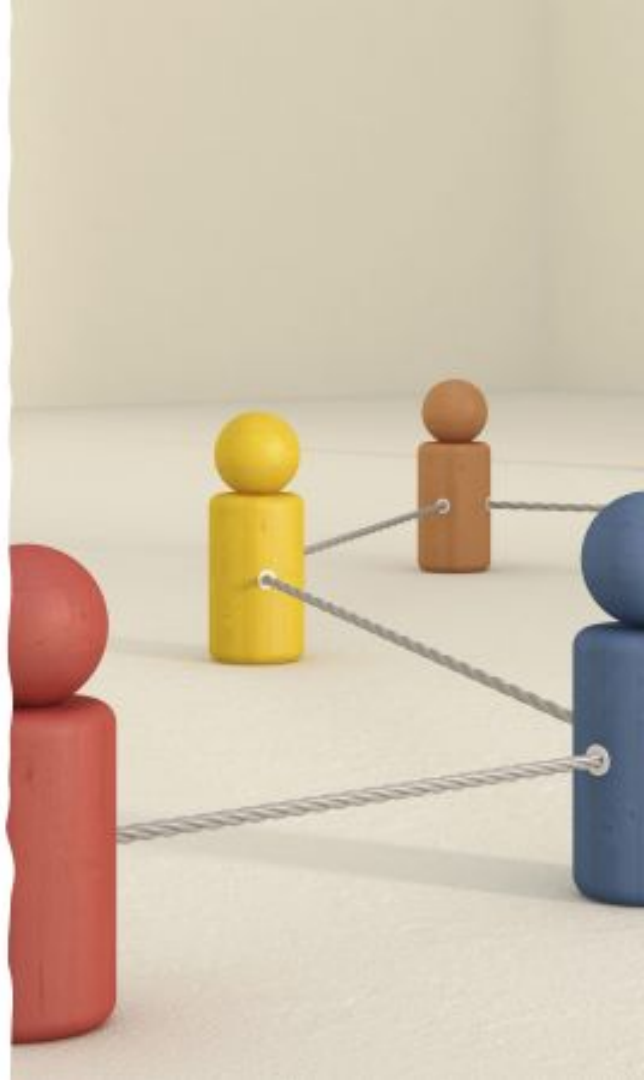
Profound and complex learning difficulties including sensory impairment, physical disabilities and severe medical conditions

Targets are set based on EHCP outcomes

Progress measured using the Engagement Model

Pathway to Independence and Supported Work – Tier 2

- Moderate Learning Difficulties; building on essential skills for living, employment and community
- Taught at both Guildford and Merrist Wood (Woodlands Centre) – these are tailored to different individual support needs, EHCP outcomes and aspirations
- Functional Skills Maths & English (Entry Level 1 – GCSEs)
- Targets based around EHCP outcomes and Preparation for Adulthood Framework



Pathway For Progression Tier 3

Guildford
College

Stepping-stone to move onto further studies or Supported Employment

Functional Skills (Entry Level 3 or GCSEs)

Targets based around EHCP outcomes and Preparation for Adulthood Framework



Pathway to Supported Internship

- Internal work experience in the learning companies:
- Postal Room/Goods In
- Re-charge Shop
- Courtyard Café – Merrist Wood
- Reprographics
- New initiative from September – Clothes Recycling

Supported Internship

Guildford
College



One year programme



External work placement for 3 - 4 days



1 day in college - Job applications, building CV, communication and independence, industry knowledge and skills



Job coach



GCSE Maths and English option



16 out of 19 Learners gained permanent employment last year.



Foundation Tier 4 and Tier 5

- Personal Social Development qualification at Level 1
- GCSE Maths and English
- Vocational Pathways
 - Animal Care at Merrist Wood
 - Multi-Trades, Creative Crafts, Health & Social Care at Guildford



The
Prospect
Trust



Please feel free to talk to staff
and take any information.



Thank you

